

Seattle - Los Angeles - Austin

ICON-BIM

www.icon-bim.com

LEADING THE BIM INDUSTRY IN
ACCURACY, EFFICIENCY, & CONSTRUCTABILITY

OUR STORY

ICON-BIM is a fully USA-based team made up of expert building tradesmen with extensive field experience and union training. We have the knowledge and ability to meet all of your project's BIM/VDC requirements.

Our leadership team has more than a hundred years of combined experience in the plumbing, pipefitting, and sheet metal trades, gained through a mix of union apprenticeship, field installation, detailing, and Mechanical Engineering. What our team details, your team can build.

Experience a **Level of Detail (LOD)** that goes well above the industry standard.

THE ICON-BIM ADVANTAGE

2:1

2:1 ratio of journeymen and apprentices on all job sites



Direct communication to the project Lead Detailer

10+ yrs

All of our journeymen detailers have 10+ years of experience



A veteran owned and operated business



Follow company/ shop standards and prefabrication method



Integrate into your existing Detailing team for added capacity



Our customers receive deliverables that are fully coordinated and constructible

OUR MISSION

1

Use our field experience to provide high-quality MEP/F detailing and coordination services that help our clients optimize process, cost, and time efficiency.

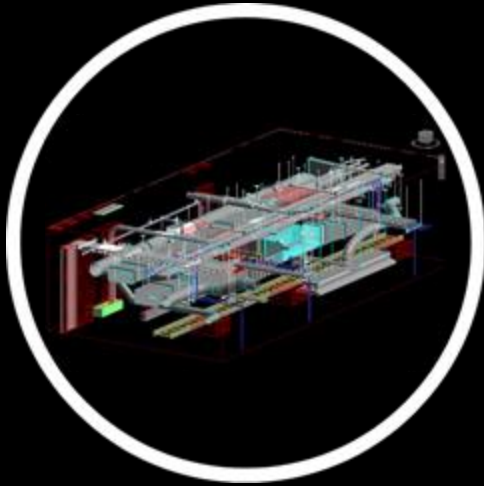
2

Integrate with our clients to serve as an extension of their team for a collaborative approach with maximum availability.

3

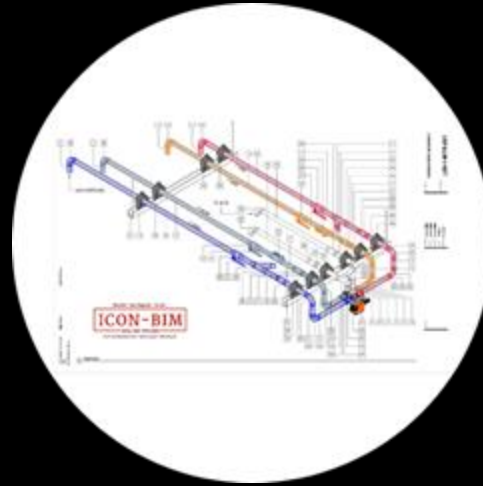
Provide all services and make all decisions with our core values in mind: Service, Performance, Integrity, Respect, Innovation, and Trust.

OUR SERVICES



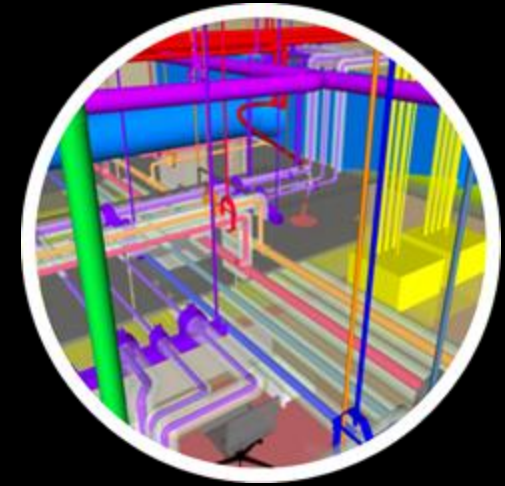
Detailing

We create BIM models up to LOD 500 for plumbing, mechanical, electrical, and fire protection systems on your projects.



Spooling

We create spool sheets based on the coordinated clash-free model for prefabrication. The byproduct of prefabrication is reduced labor hours in the field.



MEP Coordination

As tradespeople we run MEP coordination efficiently, ensuring that your MEP/F systems can be installed in the field.



WHO WE SERVE



**Project Managers &
Superintendents**



**BIM/VDC
Managers**



General Foremen



General Contractors

PROJECT TYPES: Semiconductor | Hospital | Airport | Stadium | Arena | Institutional
High/Mid/Low rise commercial and residential | Hotel | Casino | University | Government
Services Administration | Wastewater treatment | Central Plant | Mass-transit | Military
FAB tool replacement | Site Work | Core and shell | Tenant Improvement

ICON KNOWS WHAT IT TAKES

- Chiller tube pull clearance
- Air Handler Coil replacement clearances
- Equipment location for accessible maintenance
- Pipe routing around the equipment's access zone it serves.
- Swagelok fitting placement for scoping orbital welds
- Valve heights above the ceiling
- Access panel location and alignment
- Accessible field welds overhead and above the slab
- Repair couplings used for connecting rack piping
- Symmetrical hanger placement and pipe spacing
- Stud Rail coordination
- King stud and shear wall boundary element avoidance
- Maximum adjustment in a carrier faceplate
- Waste connection heights for fixtures
- Equipment submittals and cutsheets
- NEC required clearances on control panels for equipment
- Allowable spacing for install on duct runs parallel to critical walls
- Control joint, end wall, T section and bond beam review for CMU pens
- Manufacturer/code required clearances on venting/combustion air
- Energy code requirements for building envelope considerations
- Proper spacing of outside air intake and exhaust
- Fitting elimination
- Build in efficient slope angles on fittings
- Proper pressure class requirements detailed with customer specific shop standards for fabrication
- Maintain appropriate aspect ratios not to exceed 4:1
- Proper sizing of duct penetrations through slab
- Equipment and duct accessory cutsheet verification
- Seismic layout
- Duct shape change analysis where possible

Client Success Speaks Louder

What our clients have to say about their experience with ICON-BIM:

“I worked with Chris for many years. His attention to detail and understanding of building coordination is what you need to fully coordinate any project. His expertise and drive will be a major factor to any project's success.”

– Kris N. of Macdonald-Miller Facility Solutions

“A second phase was added to our project that added 30% to its size without an extension to the completion date. ICON was able to quickly integrate into the BIM process and own the additional plumbing scope from coordination to spool fabrication drawings and Trimble points. BIM was completed accurately, on schedule and at the quoted price. That is a win!”

– Derek K. of JH Kelly, LLC

ICON-BIM
www.icon-bim.com

Our Client Partners



TEAM



Chris Markham
CEO



Mat Edelblute
HVAC Vice President



Brad Cline
Senior Project Manager



Scott DeCamillo
Plumbing & Pipefitting
BIM Manager



Drew Miller
Southwest Division
Manager



Auston Miller
CAD Manager

VALUES



Service



Performance



Integrity



Respect



Innovation



Trust

Branch Locations



Austin Division

9130 Jollyville Road
Austin, TX 78759



Southwest Division

12100 Wilshire Blvd, Suite 800
Los Angeles, CA 90025



Northwest Division

33301 First Way South, Suite 200
Federal Way, WA 98003

Proudly Serving North America

Let's Redefine Modeling Accuracy

[Click here for examples of our Deliverables](#)

Website: <https://www.icon-bim.com/>

**Company
Phone:** + 1 (866) 905-9850

**Company
Email:** info@icon-bim.com



<https://www.linkedin.com/company/icon-bim>

Detailers from the field, Detailing for the field.

When you partner with ICON-BIM, you have a partner for the entire project lifecycle.

Seattle - Los Angeles - Austin

